

An aerial, high-angle photograph of a dock system. A large boat lift is the central focus, with a boat partially visible inside it. To the left, there's a circular table with two chairs. To the right, a curved dock section is visible. The entire scene is bathed in a deep blue light, creating a monochromatic effect. The background shows some foliage and a clear sky.

SHOREMASTER

PREMIUM DOCKS, BOAT LIFTS AND ACCESSORIES

COVERING THE WATER SINCE 1972



SHOREMASTER

220 SunSaver



BE THE ENVY OF THE LAKE

Crafted with the utmost attention to detail and superior beauty, the ShoreMaster Infinity Waterfront System stands out from the rest. ShoreMaster Infinity Dock and Boat Lifts have been trusted for decades to provide exceptional aesthetic appeal, infinite configurability, and unmatched customization on waterfront properties throughout the United States and Canada.

TABLE OF CONTENTS

- 06 Curve Dock Systems
- 08 InfinityTrack Dock Accessories
- 14 Decking Options
- 18 Infinity Dock Systems
- 28 Infinity Boat Lift Models
- 42 Canopy Systems
- 46 Boat Lift Motors
- 50 Accessories
- 54 Specifications



YOUR DOCK. YOUR WAY.



A TRULY CUSTOMIZED WATERFRONT EXPERIENCE

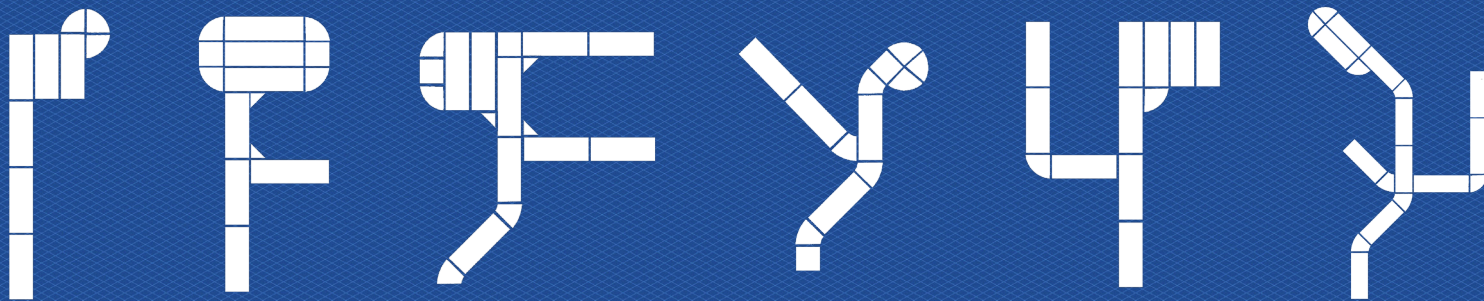
Curve Dock Systems • Dock Accessories • Decking Options



INFINITY CURVE

ENHANCE YOUR *CURVE* APPEAL





ShoreMaster's exclusive 45 and 90-degree curve dock sections will make your dock the envy of the lake. You'll enjoy the unparalleled versatility, functionality, and elegance your waterfront experience needs and deserves with ShoreMaster's Infinity Dock System.

INFINITE CONFIGURABILITY

- Exclusive 45° and 90° Curve Sections
- Infinity Frame Connection for hassle-free installation

PREMIUM STABILITY

- Welded Construction
- 5-Sided Dock Legs[®]
- 4" Side Rail

UNPARALLELED CUSTOMIZATION

- Maximize your Shoreline
- Truly unique layouts and designs for your dock



INFINITY TRACK

DOCK ACCESSORIES





InfinityTrack[®]

THE EASIEST WAY TO **CUSTOMIZE YOUR DOCK.**

ShoreMaster's InfinityTrack[™] accessory system offers the easiest, most complete way to customize your dock. Offering the most accessories in the industry, as well as tool-free, hassle-free installation, you won't find a more convenient or complete system anywhere.

NO TOOLS. NO HASSLES.

- Exclusive InfinityTrack[™]
- Easy assembly and tool-free installation
- No holes to drill - it couldn't be more simple

ULTIMATE CUSTOMIZATION

- Attach anywhere along the perimeter of the dock
- Reconfigure and rearrange at a moment's notice

INDUSTRY'S MOST ACCESSORIES

- Premium furniture, dock steps, bumpers and more
- Easily add-on, update and reconfigure your dock system

DOCK FURNITURE

SIT BACK AND RELAX, IT'S SUMMER



KASHTON DOCK FURNITURE

OFF-DECK

Our Kashton furniture offers a simple yet versatile design and an all-aluminum construction for a genuinely unique dock furniture experience. The swivel rocker mechanism provides comfort and function in all climates. Choose from five fabric options for furniture that matches your waterfront space's unique style (chairs and umbrella coordinate). Kashton furniture is available as a set (two chairs, table, and umbrella) or individual pieces.



STANDARD DOCK FURNITURE

OFF-DECK

Our standard Homecrest furniture offers a more economical option without sacrificing quality or comfort. Featuring sloped armrests, premium quality fabric slings, and all-aluminum construction, our Standard Furniture features an ivory frame, beige fabric sling, mesh table, and tan umbrella.



GRACE AIR DOCK FURNITURE

ON-DECK

ShoreMaster's Grace dock seating features a deep-seated lounge chair's appearance and comfort but in a foam-free, cushion-less construction. The premium Sensation sling fabric dries quickly for low-maintenance comfort that is perfect for the water's edge. Available in two styles (armed or armless) and six fabric options to meet your personal style.



FIRE TABLE

ON-DECK

ShoreMaster is excited to announce a welcomed addition to any outdoor space – our new dock-mounted fire table. Homecrest Fire Tables are available in a Hickory or White finish; the Dock Fire Table is the perfect complement to any of the ShoreMaster Dock Furniture. Featuring top-quality and, American-made, our Dock Fire Tables are designed to withstand the elements season after season.





THE INDUSTRY'S MOST DOCK ACCESSORIES

DOCK LIGHTS

Set your Infinity Dock System aglow in the evening with solar-powered dock lights from ShoreMaster. Mounted directly into the dock leg cap, our Dock Lights are easy to install and offer an attractive and discreet low profile. No tripping, no wasted dock space. A bright solar-powered LED light provides an evening illumination without the hassle of cords or wires.



WATERSPORTS RACK

Get back on the water faster with the Watersports Rack. Store your paddleboard, kayak, or canoe off your dock for easy storage and access to all your watersports accessories. Choose between a single or double rack and attach anywhere along the perimeter of your dock to accommodate your setup and needs.



DUAL STAND-UP PADDLEBOARD RACK

Maximize your time on the water by securely storing your paddleboards on the dock. Our Stand-Up Paddle Board Rack includes integrated bungee holes for easy buckling and strapping and fast, secure paddle board storage.





LADDERS & STEPS

Get in and out of the water quickly with ShoreMaster's Pivoting Ladders and Dock Steps. Utilizing the InfinityTrack accessory system, our ladder and dock steps can be mounted anywhere along the dock frame to accommodate your dock and slip setup. A vertical pivoting action and locking pin allow you to flip the ladder up when you're not using it. At the same time, standard handrails on the steps provide safe, stable usage and entry. All-aluminum construction means hassle-free ownership.



RAMPS/GANGWAYS

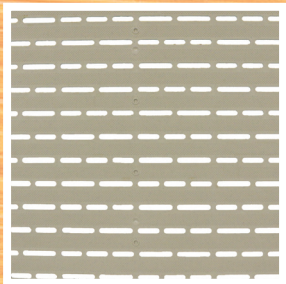
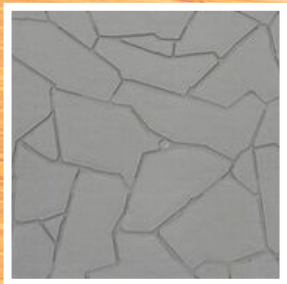
ShoreMaster offers high-quality, affordable gangways, ramps, and other dock-to-shore transition products and accessories - all designed to be safe, durable, easy to install, and easy to own. Choose from multiple width and length options and lengths to suit your unique shoreline. Plus, with ShoreMaster's industry-leading line-up of decking choices, your ramp and gangway are sure to look amazing for years to come.



**FOR MORE INFORMATION ON THE INFINITYTRACK ACCESSORY SYSTEM
AND TO SEE A COMPLETE LISTING OF SHOREMASTER'S DOCK ACCESSORIES
VISIT SHOREMASTER.COM**



SHOREMASTER

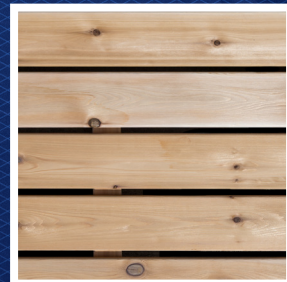
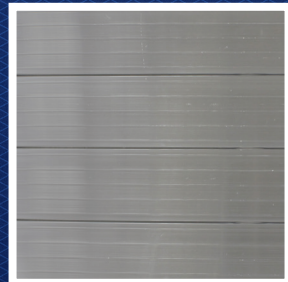
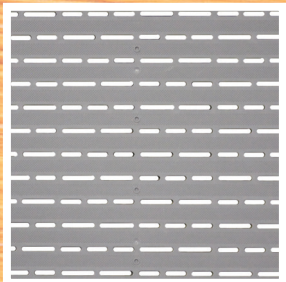




YOU DESERVE THE MOST OPTIONS

10 PREMIUM LOW-MAINTENANCE DECKING OPTIONS

There is no element on any dock system that connects more closely to the dock user than the decking. That's why ShoreMaster offers the most comprehensive range of decking choices in the industry, and ShoreMaster decking is regarded as one of the highest quality decking options available today.



CHOOSE FROM THE INDUSTRY'S MOST DECKING OPTIONS

TRADITIONAL WOODGRAIN

Get the beauty of wood without the maintenance, with our Traditional Woodgrain aluminum decking. Powder-coated using an Italian process for a premium, real wood look, our woodgrain aluminum decking gives you a timeless look year after year. Plus, aluminum decking is lighter weight and more substantial than natural wood. It won't rot, twist, warp, or decay, so you'll enjoy maintenance-free, slip-resistant decking that is as comfortable and easy to own as it is beautiful.



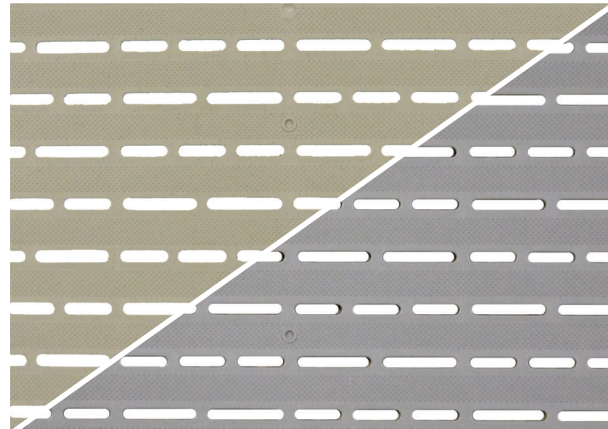
GRAY WOODGRAIN

Woodgrain is now available in Gray Oak, for a genuinely unique dock system. Aluminum woodgrain decking offers the beauty of wood without the seasonal maintenance. We utilize an Italian process to apply the powder-coat for a premium, real wood look that will hold up at even the busiest cabins. Plus, aluminum is lighter and stronger than natural wood. It won't rot, twist, warp, or decay, so you'll enjoy maintenance-free, slip-resistant decking that is as easy as it is beautiful.



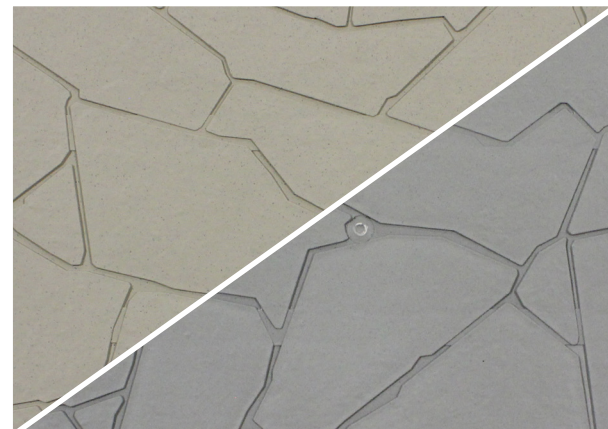
GLACIER™ FLOW-THROUGH (TAN OR GRAY)

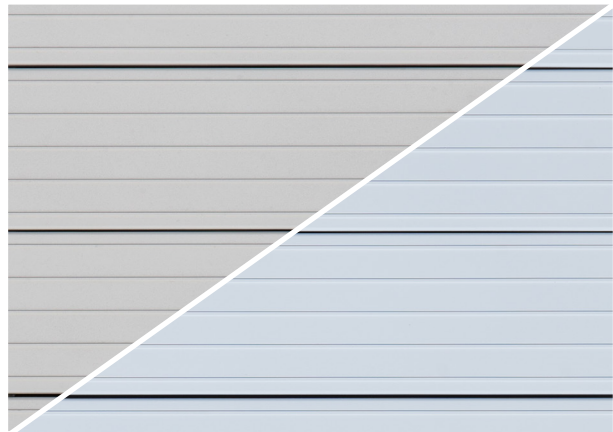
ShoreMaster's Glacier™ decking features an open flow-through design allowing water, dirt, and debris to easily pass through the deck panels. It dries faster and stays clean longer. ShoreMaster Glacier decking offering a slip-resistant surface that is easy on your feet so you can safely and comfortably enjoy your time on the dock. Plus, its low-maintenance polypropylene composition means your decking won't rot, twist or decay, and you'll enjoy hassle-free ownership season-after-season.



VERTEX™ (TAN OR GRAY)

ShoreMaster's exclusive Vertex™ decking offers a genuinely unique decking experience. The ultimate in form and function, our Vertex decking features a natural flagstone pattern that provides superior aesthetic appeal and is our most slip-resistance surface. Low-maintenance polypropylene composition means hassle-free ownership as your decking won't rot, twist or decay.

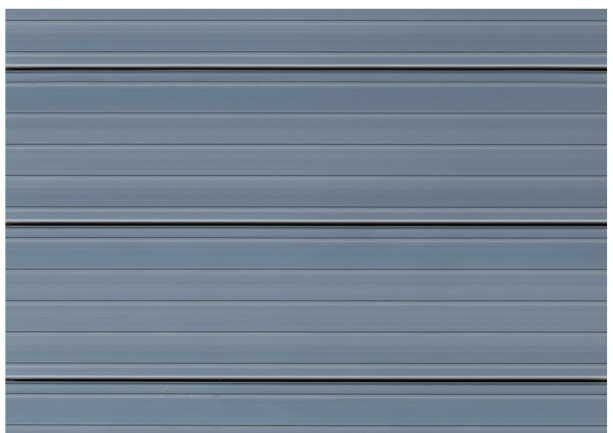




PAINTED ALUMINUM (TAN OR WHITE)

Painted Aluminum is one of the most popular choices. All-aluminum construction means the panels won't rot, warp, twist or decay. Powder-coated paint provides heat- and scratch-resistant surface for years of hassle-free ownership. Plus, each panel features a slip-resistant rib pattern making painted aluminum the perfect combination of performance, durability, and aesthetics.

**Plain aluminum available; see shoremaster.com for details*



PLAIN ALUMINUM

ShoreMaster's plain aluminum decking provides a low-maintenance, long-lasting options for dock owners looking for an entry-level decking option. Aluminum decking offers premium durability plus its safe, slip-resistant surface provides comfortable usability. Plain aluminum decking is a cost-effective decking solution that won't rot, warp, twist or decay and works on all ShoreMaster Infinity Dock System models.



CEDAR

ShoreMaster's natural cedar wood decking provides a cost-effective, real wood option for decking your dock system. Plus, nothing feels better on your bare feet than the soft, natural beauty of cedar decking. Requiring minimal, seasonal maintenance cedar wood decking provides a natural aesthetic that will look great for seasons to come.

SHOREMASTER DOCK SYSTEMS FEATURE REMOVABLE, RECESSED DECKING PANELS, BUT WHY?

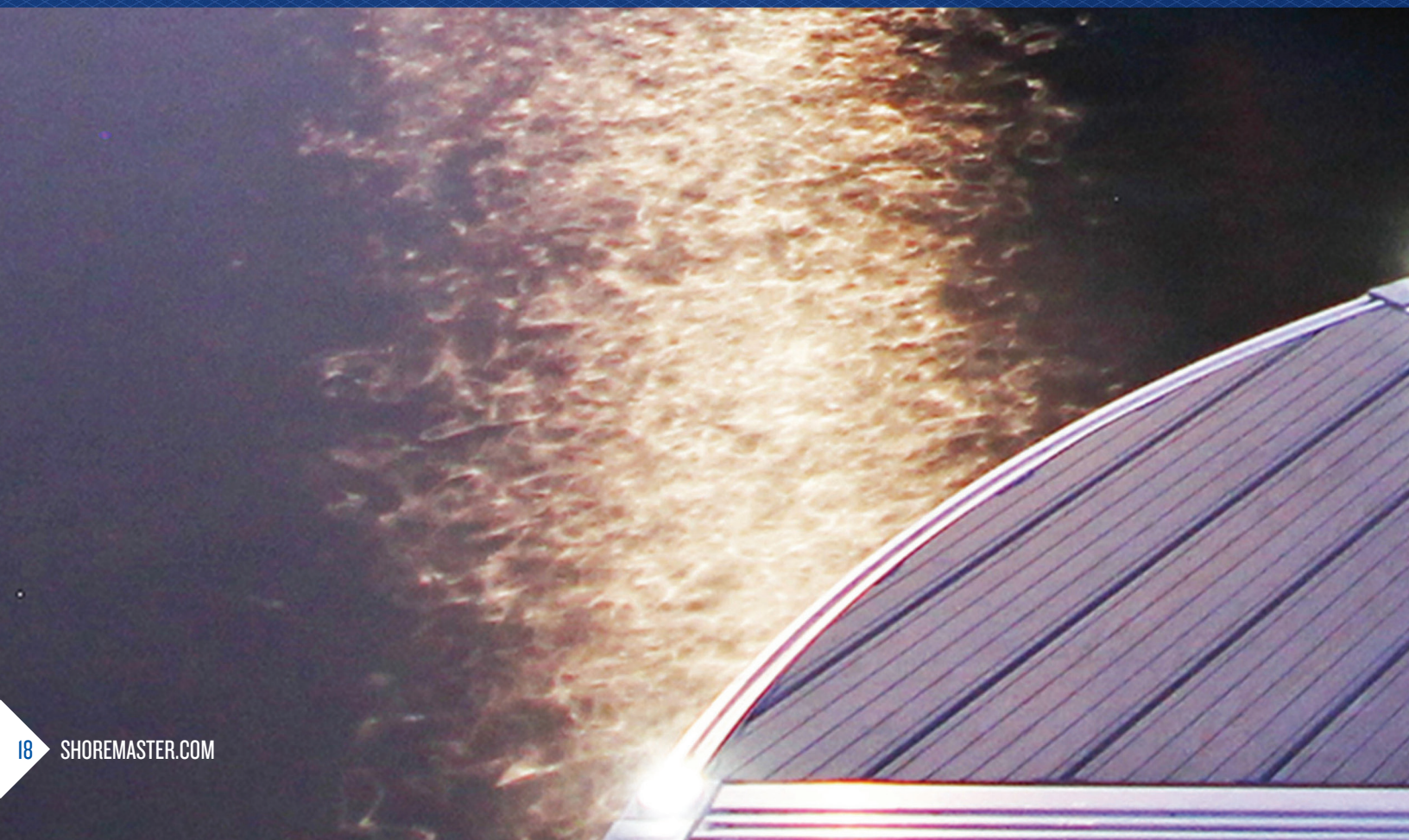
We build the strength of our dock systems into the frame sections themselves. We don't rely on the decking attachment to provide the system its strength. Second, it's better for the owners of our systems.

It provides options and makes installation, removal, upkeep and upgrades much easier.

Light, Easy Installation/Removal • Update Opportunities • Repairs to Single Panel, Not Entire Dock
Trust That the Integrity and Strength of Your System is Within the Frame Itself



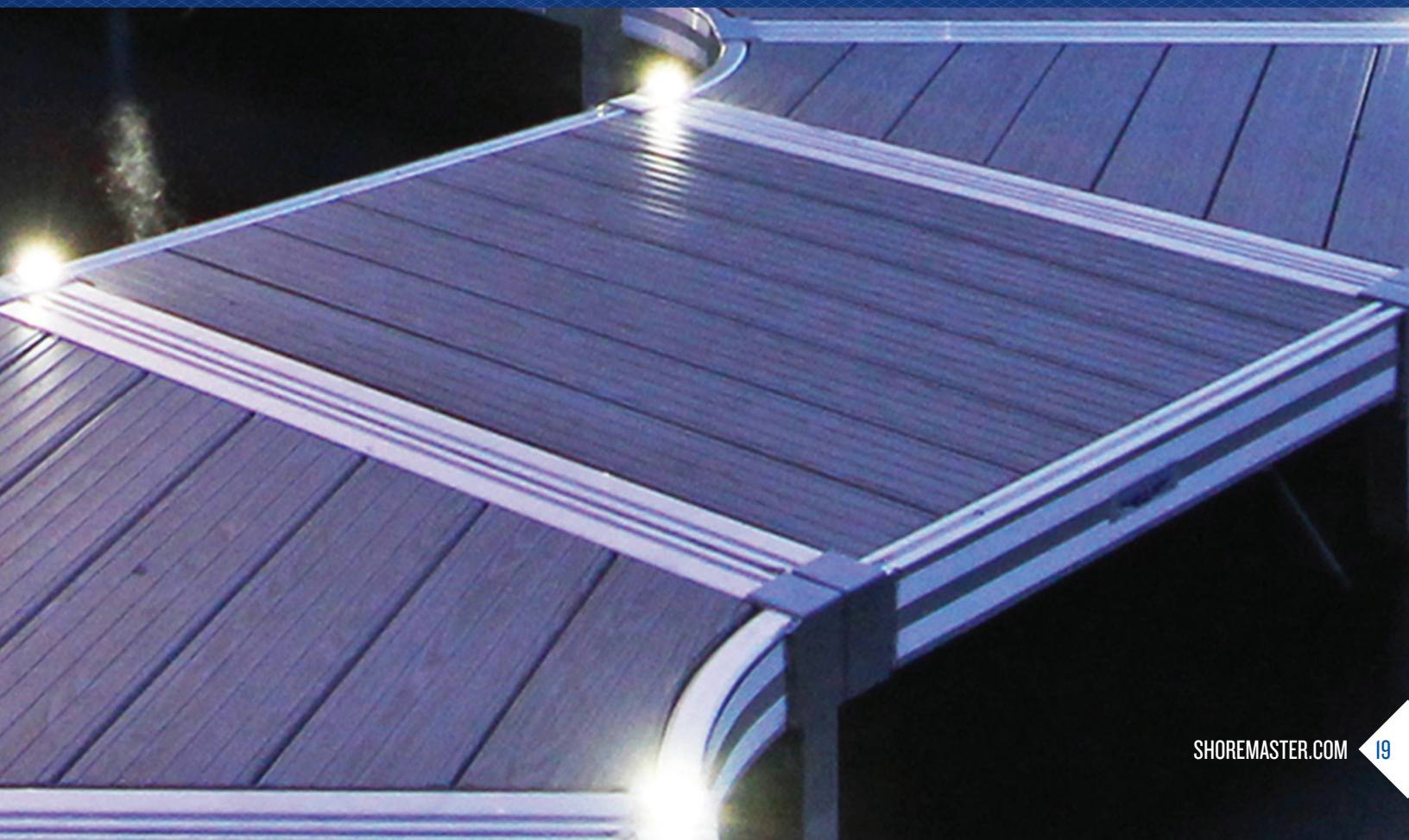
INFINITY™ DOCK SYSTEMS





A DOCK SYSTEM DESIGNED TO WORK FOR YOU

Infinity RS4 • Infinity RS7 • Infinity TS9 • Floating FTS9



INFINITY™ DOCK SYSTEMS

DOCK SYSTEM SOLUTIONS FOR EVERY WATERFRONT



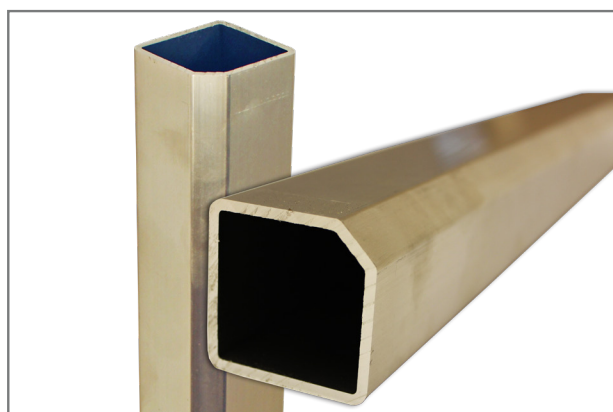
INFINITY FRAME CONNECTIONS

All Infinity dock models feature the Infinity Dock Connection System, which allows for dock sections to be connected together anywhere along the dock's perimeter using a simple connection bracket and T-handle. Initial installation and seasonal reconfigurability are quick, easy, and hassle-free.



5-SIDED DOCK LEG & 18" LEG POCKET

5-Sided Dock legs provide three points of contact (versus two points offered by most other systems) for superior stability and performance. 18" leg pockets allow for maximum adaptability to fluctuating water levels as well as providing unmatched stability and the ability for dock legs to sit flush with the dock surface for an unobstructed dock system.



PRECISION WELDED CONSTRUCTION

Lightweight aluminum welded construction all provide for the quick, easy installation of your sectional dock system. The Infinity Dock System was developed to be the most versatile, durable, and user-friendly system on the market.

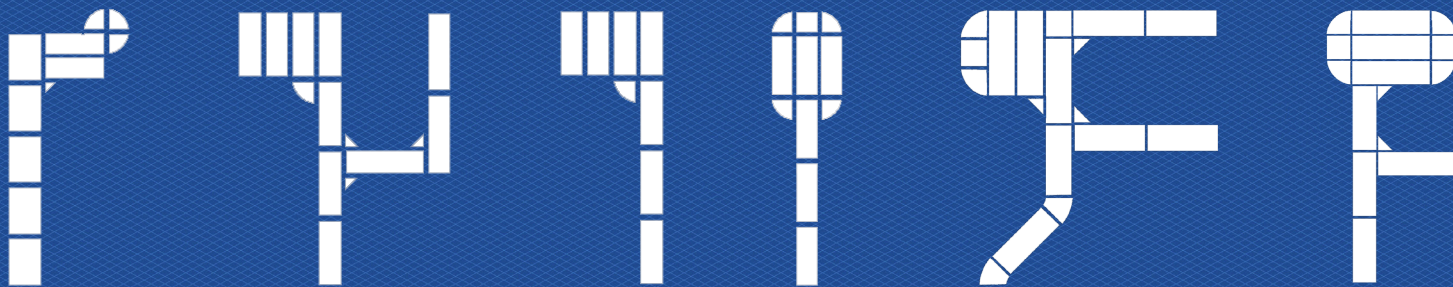


DOCK MODELS	INFINITY RS4	INFINITY RS7	INFINITY TS9	FLOATING FTS9
SIDE STYLE	Boxed Rail	Boxed Rail	Truss	Truss
SIDE HEIGHT	4"	6-3/4"	9"	9"
DOCK STYLE	Sectional	Sectional or Wheel-in	Sectional or Wheel-in	Floating
SECTION ATTACHMENTS	Infinity Connection System	Infinity Connection System	Infinity Connection System	Bolt Together Connection
LEG STYLE	5-Sided Dock Leg	5-Sided Dock Leg	5-Sided Dock Leg	Not Applicable Uses Premium ShoreMaster Flotation
LEG POCKET HEIGHT	18"	18"	18"	
SCREW LEGS AVAILABLE	Yes	Yes	Yes	
DECKING STYLE	Recessed, Removable	Recessed, Removable	Recessed, Removable	Recessed, Removable
DECKING OPTIONS	10	10	10	10

INFINITY RS4

THE ULTIMATE DOCK EXPERIENCE





PREMIUM STABILITY

- 4" Rail Side
- Precision Welded All-Aluminum Construction
- 5-Sided Dock Leg and 18" Leg Pocket
- Double Leg Bracing

TOTAL CUSTOMIZATION

- Exclusive InfinityTrack™ Dock Accessory System
- 10 Decking Options

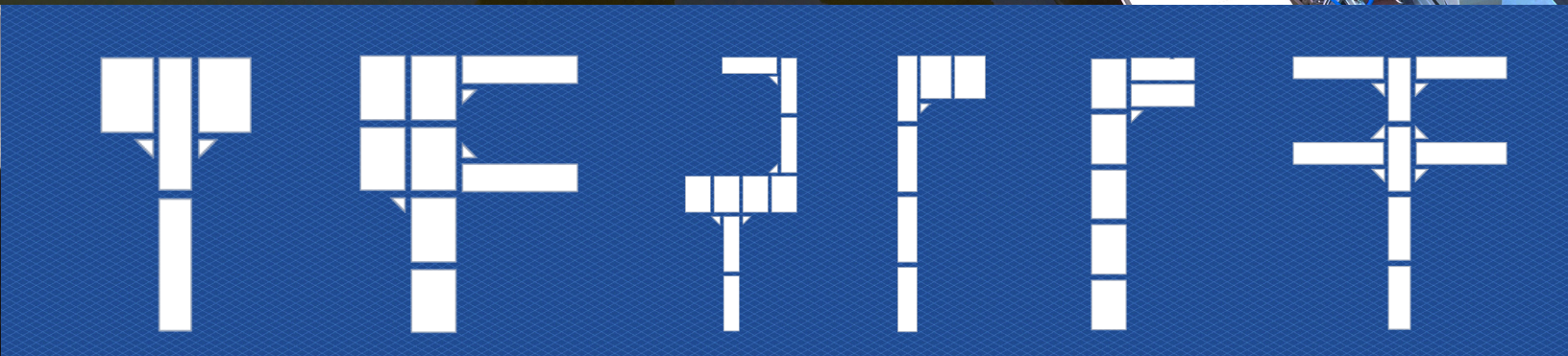
EASY INSTALLATION

- Infinity Frame Connection System
- Removable Decking Panels

INFINITY RS7

UNPARALLELED STRENGTH AND STABILITY





SUPERIOR STRENGTH

- 6-3/4" Rail Side
- Precision Welded All-Aluminum Construction
- 5-Sided Dock Leg and 18" Leg Pocket
- Double Leg Bracing

TRUE CUSTOMIZATION

- Exclusive InfinityTrack™ Dock Accessory System
- 10 Decking Options

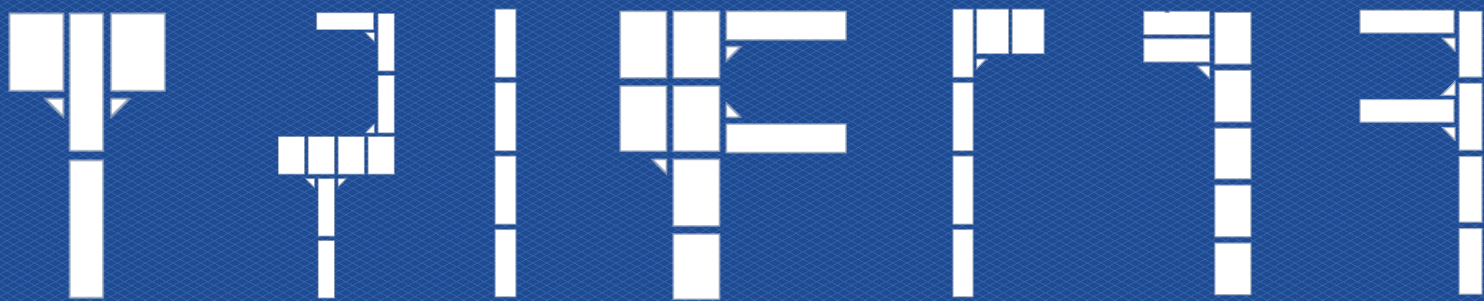
FORM & FUNCTION

- Available as both sectional and wheel-in dock system
- Screws legs adapt to fluctuating water levels

INFINITY TS9 / FTS9

CLASSIC TRUSS DESIGN. SUPERIOR STABILITY.





STRENGTH + STABILITY

- Classic 9" Truss Side
- Precision Welded All-Aluminum Construction
- 5-Sided Dock Leg and 18" Leg Pocket
- Premium Flotation System

FORM & FUNCTION

- Available as sectional, wheel-in and floating dock system
- Adaptable to deep and fluctuating water levels

EASY INSTALLATION

- Infinity Frame Connection System
- Removable Decking Panels



INFINITY™ BOAT LIFTS





MAXIMUM RELIABILITY AND PERFORMANCE

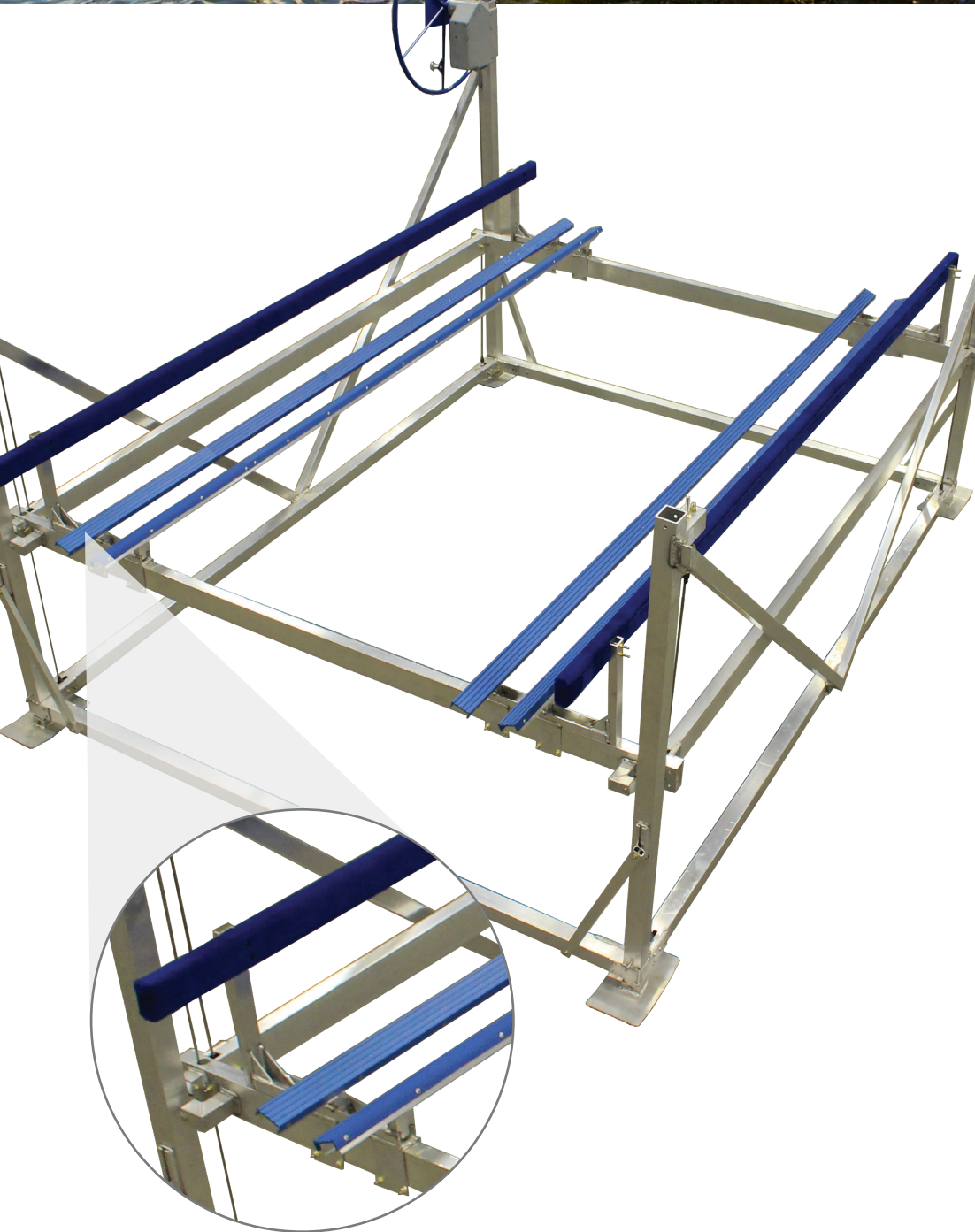
Pontoon • Vertical • Hydraulic • PWC • ShorePort



PONTOON LIFTS

SPECIALLY DESIGNED FOR TODAY'S PONTOONS





OVER-SIZED FOR TODAY'S PONTOONS

- Wider, Longer Frame for Larger Pontoons
- Ideal for Pontoons Longer than 26'
- Full-Length Guide Rail for Even Weight Distribution

EASY OPERATION

- Choose an Integrated or Add-On Boat Lift Motor for Push Button or Remote Operation
- Double V-Side Design

PREMIUM PERFORMANCE

- Precision Welded All-Aluminum Frame for reliability and stability
- Exclusive Whisper Winch for the quietest and most trusted performance

VERTICAL LIFTS

THE INDUSTRY'S **MOST TRUSTED** BOAT LIFT





SUPERIOR STABILITY

- Precision Welded All-Aluminum Frame
- Corner Bracing for Added Stability
- Premium Components and Hardware

SHALLOW WATER SOLUTION

- V-Rack Design
- 66" Lift Rack Travel
- Premium Low and Fluctuating Water Solution

TIME-TESTED DESIGN

- Manufacturers of the First Welded Aluminum Boat Lift
- Expertly Manufactured
- Double V-Side Design
- Exclusive Whisper Winch for the quietest and most trusted performance

TRULIFT™ HYDRAULIC

TRU CAPACITY. TRU HYDRAULIC. TRU PERFORMANCE.





TRU CAPACITY

- Guaranteed to 100% full listed capacity
- Over-Engineered and Over-Tested

TRU HYDRAULIC

- Lay-Flat Design Provides Low Water Solution
- Premium Hydraulic Pump and Components
- Simple, Reliable Operation; Minimal Maintenance

TRU PERFORMANCE

- Our Fastest Lift Model with Speeds of 1 inch Per Second
- Convenient Remote Control Operation Comes Standard
- Precision Welded Construction, All-Aluminum Frame

PWC LIFTS

SAFE, **SECURE** STORE FOR YOUR PWC





**Shown above with optional Winch Extension Kit*



SUPERIOR STABILITY

- Precision Welded All-Aluminum Frame
- Premium Components and Hardware

EASY USE AND OWNERSHIP

- Time-Tested Design
- Up to 50" Lift Rack Travel
- Available Winch Extension Kit for Easier Wheel Usage

TIME-TESTED DESIGN

- Manufacturers of the First Welded Aluminum Vertical Boat Lift
- Expertly Manufactured

EXTENDED STORAGE

- Secure, Out-of-Water Extended Storage
- Keeps PWC Clean and Dry

PWC DRIVE-ON PORTS

FAST AND CONVENIENT ACCESS TO THE WATER





AVAILABLE IN TWO COLORS:



EASY & SAFE ACCESS

- Three model sizes to fit your specific PWC needs
- Skid resistant walking surfaces

ANCHORAGE OPTIONS

- Connection hardware for standing and floating dock applications
- Free standing anchorage
- Front or side connection capabilities to suit your waterfront setup

EXTENDED STORAGE

- Front Mount Cleat or Molded-In Tie Down
- Secure, Out-of-Water Extended Storage
- Deep Hull Cavities Keep PWC Clean and Dry

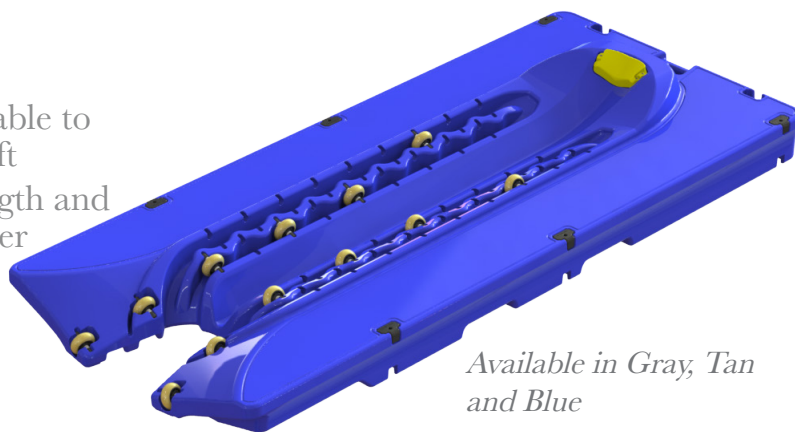
PWC DRIVE-ON PORTS

FAST AND CONVENIENT ACCESS TO THE WATER



HYDROPORT EPIC™

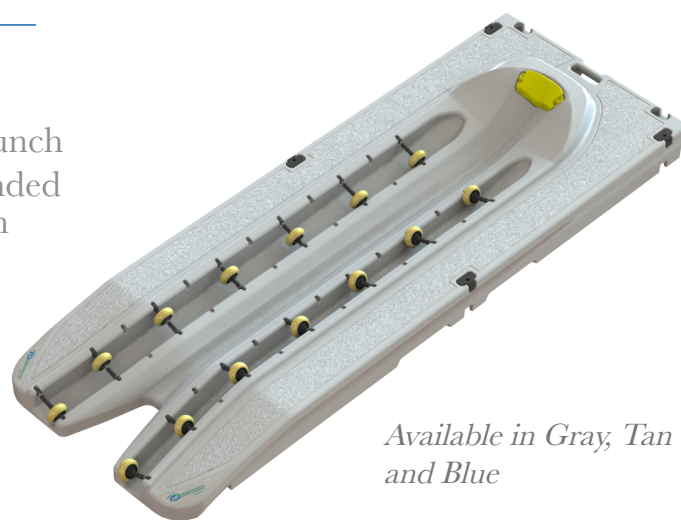
- Dual in-line roller support utilizing high performance rollers, adjustable to any craft
- Wide anti-skid walkways for access around the craft
- Ultra-tough polyethylene construction
- Exclusive “Air-Pillow” bow stop
- Roller width and placement is easily adjustable to accommodate different models of watercraft
- Stainless steel roller axles for increased strength and compatibility in fresh, brackish, and salt water
- Multiple dock and free-standing connection and anchorage options
- Specifications:
Capacity: 2,000 lbs
Length: 162” | Width: 70”



Available in Gray, Tan and Blue

HYDRPORT EXTREME™

- Flat anti-skid walking surfaces
- Exclusive “Air-Pillow” bow stop
- PWC is fully roller supported for easy load and launch
- Ultra-tough polyethylene construction with Expanded Polystyrene (EPS) Marine Foam increased strength and leak elimination
- Fourteen easily adjustable 5” x 2” rollers to accommodate all models of watercraft
- Stainless steel roller axles for increased strength and compatibility in fresh, brackish, and salt water
- Specifications:
Capacity: 1,625 lbs
Length: 162” | Width: 58”



Available in Gray, Tan and Blue

SHOREPORT™

- Premium stability for safe, and easy loading and launching
- Virtually maintenance-free ownership
- 8” front-mounted tie down cleat
- Safe, textured, slip-resistant walking surface
- Polyurethane rollers for smooth PWC loading and launching
- Adjustable rollers accommodate virtually any PWC hull
- Rear roller for easy transition from water
- Hydrophobic vent accommodates changing climates and temperatures
- Variety of anchoring options to suit nearly any installation application
- Specifications:
Capacity: 1,150 - 1,450 lbs*
Length: 138” | Width: 58”



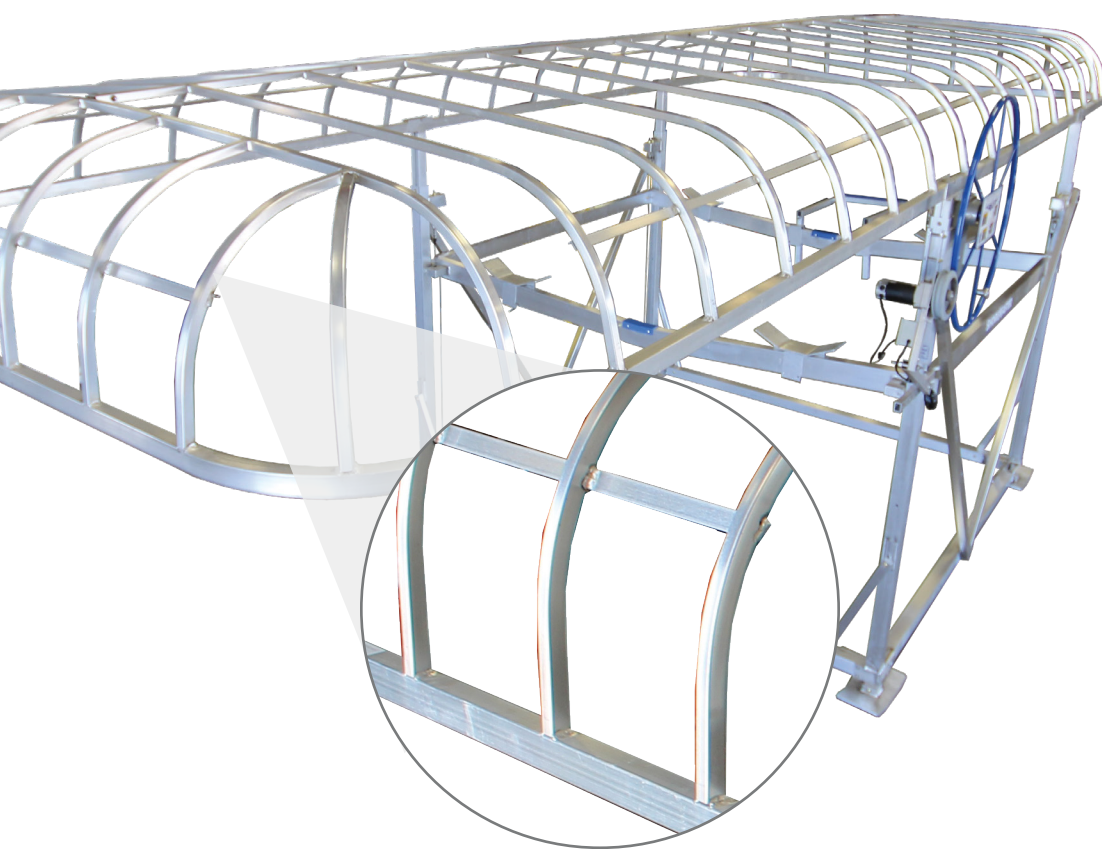
Available in Gray and Tan

* Standard capacity is 1,150lbs; additional capacity provided by supplemental flotation in 100lb increments up to 1,450 lbs

CANOPY FRAMES

YOUR BOAT. YOUR INVESTMENT. **PROTECT IT.**





ShoreMaster Canopy Systems utilizes superior craftsmanship and design paired with premium components and fabrics to provide the ultimate protection for your boat. Deep rounded ends on the traditional canopy frame allow you to tuck your boat completely underneath the frame, while our ShoreMaster Fabrics vented canopy covers still allow for breathability to inhibit mold and mildew.

PROTECT YOUR INVESTMENT

- Maintain Boat Value with Protection from Elements
- Vented Ends for Breathability, Inhibits Mold and Mildew

SUPERIOR COVERAGE

- Deep, Rounded Design
- Shallow Pitch
- Tuck Boat Completely Underneath Frame

EASY ASSEMBLY AND INSTALLATION

- Precision Welded All-Aluminum Frame
- Less Pieces and Time than Bolt-Together Systems

2 FRAME STYLES

- Classic Traditional and Hip Roof Style Frame Available

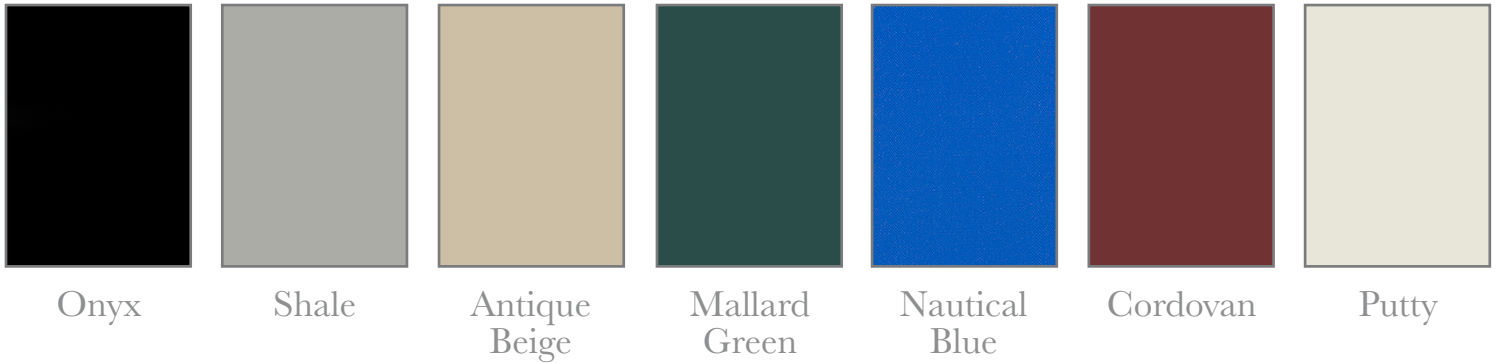
CANOPY COVERS

PREMIUM PROTECTION FROM THE ELEMENTS



HARBORTIME

Our premium fabric option, HarborTime, offers a lighter weight cover option, weighing 11 oz. per square foot. HarborTime is highly water repellent and resistant to mildew and ultraviolet light, making it ideal for a boat lift canopy cover. As an acrylic-coated polyester fabric cover, HarborTime offers premium visual appeal, exceptional abrasion resistance, and superior strength. It is perfectly suited for the harsh marine environment. The fabric is stabilized to ensure a continuous fit season-after-season. Simultaneously, the acrylic coating retains a beautiful soft cloth appearance and provides a longer cover life.



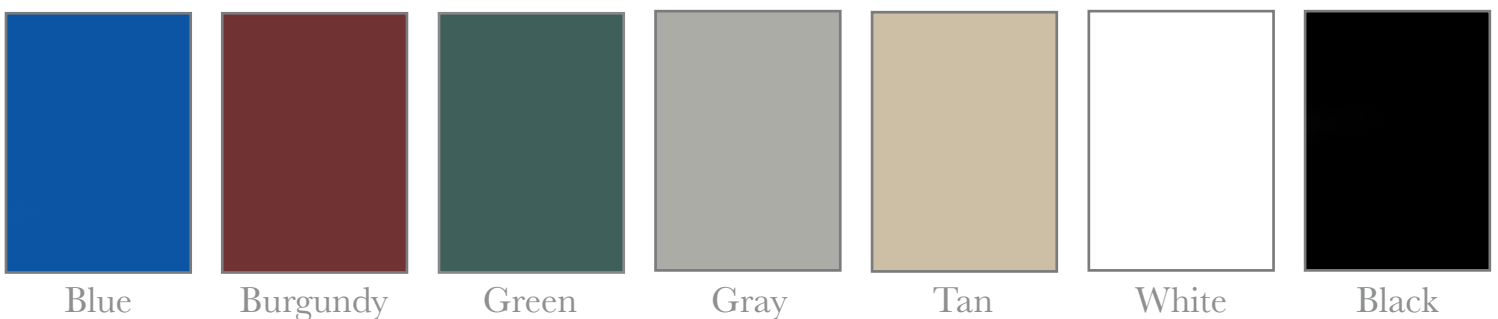
WEATHERMAX

ShoreMaster's WeatherMax® fabric canopy covers offer superior protection from the elements for your boat. You'll enjoy WeatherMax's ease-of-use when it comes to installation, removal, or storage of the cover because WeatherMax is incredibly lightweight and easy to handle.



13OZ VINYL

13oz vinyl canopy covers provide excellent tear, UV, mold, and mildew resistance. Plus, at 13oz, our covers are lighter than the industry standard, providing easier installation and removal without sacrificing the durability or moisture and UV protection that you expect from a premium canopy cover.



Color swatches are printed representations only and should not be used for color matching. See your local ShoreMaster dealer for actual color samples.

BOAT LIFT MOTORS

MAXIMIZE YOUR TIME ON THE WATER



DOWN Up

EXTREME MASTER

BOAT LIFT

- Understand all instructions and warnings prior to use
- Only for use by adults over age 18
- Wait for the motor to come to a complete stop before changing directions
- When lowering the lift, go down just far enough so the boat will come off of the lift
- Do not use remote more than 10 feet from the lift
- Never attempt to use the key switch and the remote control at the same time
- Do not overload the capacity of the lift or drive system
- In case of emergency unplug unit from power source to disable the system
- Misuse of this product can result in property damage, bodily injury or death

CAUTION: This unit must be connected to a properly wired Ground Fault protected circuit. It is unsafe to try, test or use Boat Lift Boats without Ground Fault protection. All Boat Lift Boats electrical wiring must be installed to local and National Electrical Code using a licensed Electrical Contractor. Improper wiring can cause injury or death.

www.extrememax.com
boatliftboats@extrememax.com
Tech Line: 651-357-1862
Patents Pending

Assembled in USA
212504919

SHOREMASTER LIFT BOSS

Featuring long-lasting, corrosion-resistant hardware, the ShoreMaster Boat Lift Motor is wired and assembled by hand in the USA and tested three times for quality control before packaging. Included with your motor is a Whisper Winch mounting kit for easy mounting to all ShoreMaster Whisper Winch boat lifts. It is easier than ever to get out on the water with the ShoreMaster Boat Lift Motor, available with key-turn, corded remote, or wireless operation.

- 120V or 12/24V; Optional Solar Panel, Lights and accessories available
- Key-turn, corded remote or wireless remote operation
- 20-Minute Installation
- Works with ShoreMaster Whisper Winch boat lifts



INTEGRATED LIFT WINCH AND MOTOR

Boat Lift operation has never been this easy. The ShoreMaster Integrated Winch and Motor offers the convenience of motorized lift operation without the added installation required. Plus, integrated drive systems gets you back on the water faster. All models include easy key-turn operation. For additional ease-of-use, choose either wireless or a corded remote operation.

- No Additional Installation Required
- 20V or 12/24V; Optional Solar Panel and accessories available
- Key-turn, corded remote or wireless remote operation



SHOREMASTER LIFTMATE

You want a boat lift motor that is easy to install, easy to operate, and won't let you down when it's time to take your boat for a cruise or return from time spent on the water. The LiftMate provides you with all of that with a universal design perfect for new or existing boat lifts.

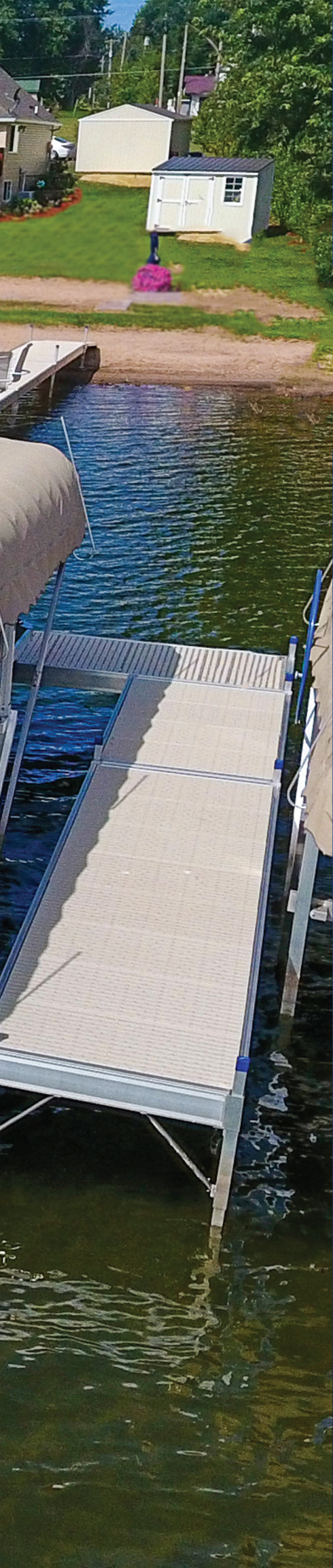
- Available in 110V or 12V; Optional Solar Panel available
- Universal Design Works with Almost Any Boat Lift
- Simple Toggle Switch Operation
- Simple, Easy Installation





SHOREMASTER

HONDA
90



A WATERFRONT SYSTEM THAT YOU CAN COUNT ON

Only ShoreMaster provides you with the most incredible selection of high-performance docks, boat lifts, and accessories. Each has been time-tested and proven to outperform the competition season-after-season. Plus, ShoreMaster touts the largest and most experienced dealer network in the industry. You'll find yourself amazed by the professional, friendly service you'll receive from ShoreMaster's industry-leading nationwide dealer network. When you visit an authorized ShoreMaster dealer, you'll experience ShoreMaster quality and premium design first-hand as you walk on a ShoreMaster Infinity dock or operate a ShoreMaster boat lift. You'll find your ideas coming to life when you choose ShoreMaster.

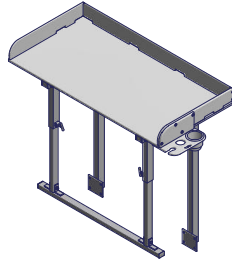
DOCK/PIER ACCESSORIES

Make Your Dock & Lift System Work For You.



DOCK STEPS

*4- and 6- Step Options
(2 Styles Available)*

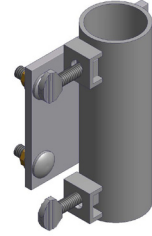


FISH CLEANING TABLE



DOCK BENCH

*Available with or
without armrests*



FLAGPOLE AND UMBRELLA HOLDER



HANDRAIL

*Various Lengths
Available*



FISHING ROD HOLDER

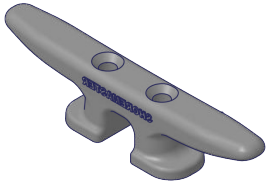


WATERCRAFT ENTRY ASSISTANT



DOCK BUMPERS

*Vertical, Horizontal,
and Corner Options*



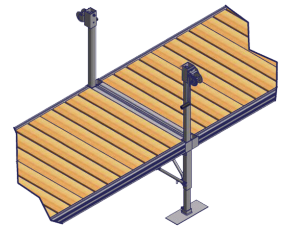
DOCK CLEAT



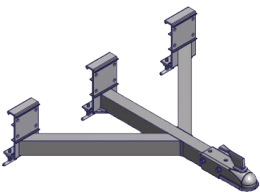
FLAG POLE



SHORE-END WHEEL-IN KIT

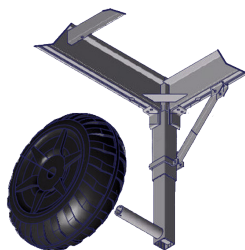


WINCH LEVELING KIT



TOW HITCH

*For Infinity RS7 &
Infinity TS9 systems only*



SCREW LEGS

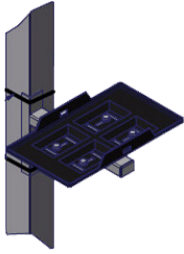
*For use with wheel or
foot pads*

INFINITY TRACK
DOCK ACCESSORIES

*To learn more about ShoreMaster's
Exclusive InfinityTrack accessory system
see pages 8 - 13 or visit
shoremaster.com*

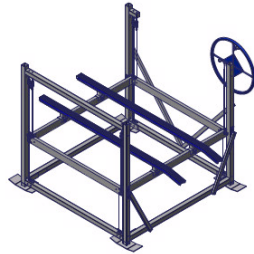
LIFT/HOIST ACCESSORIES

Make Your Dock & Lift System Work For You.



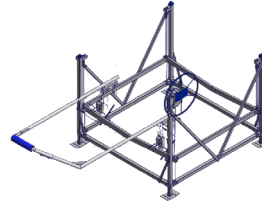
BATTERY TRAY

*Leg & Canopy Mount
Options*

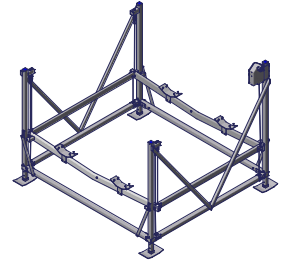


BUNKS

*Carpeted or Vinyl
Options Available*

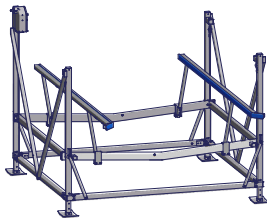


BOW GUIDE



CRADLES

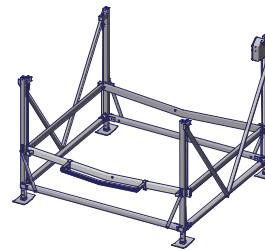
*V-Hull, Pontoon, &
Tri-Toon Options*



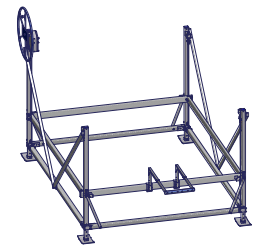
FULL LENGTH GUIDES



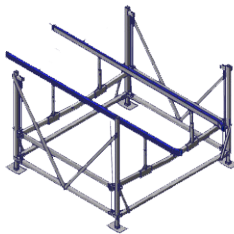
LIFT ASSIST TOOL



MOTOR STOP

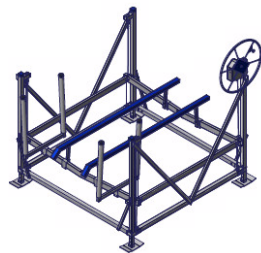


PONTOON MOTOR STOP

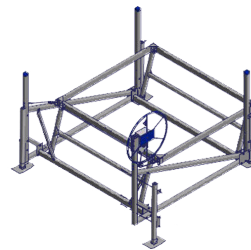


PONTOON RAIL KIT

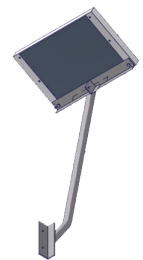
*Wood Required; Sold
Separately*



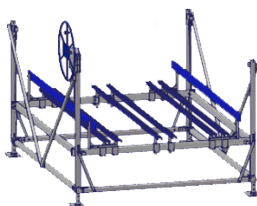
PVC GUIDES



SCREW LEGS



SOLAR PANEL



TRI-TOON CRADLE

Only for Pontoon Lifts



UNIVERSAL CADDY



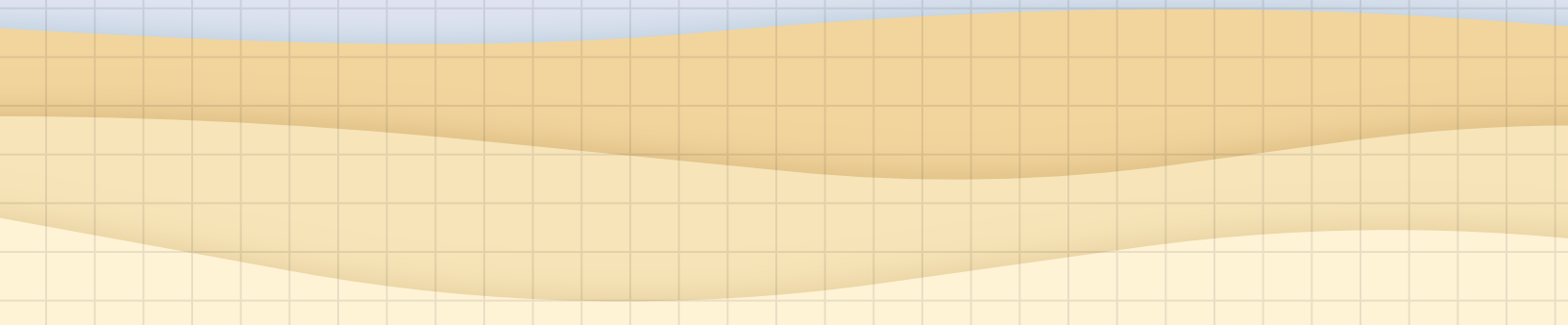
WHEEL CADDY

*Tri- and Quad-Caddy
Options*

*For more information and a complete list of dock and lift accessories visit
SHOREMASTER.COM*

YOUR DOCK. YOUR WAY.

DESIGN A DOCK & LIFT SYSTEM EXCLUSIVELY FOR YOU



SPECIFICATIONS

Choosing The Right Product Has Never Been So Easy.

		INFINITYTRACK™ DOCK ACCESSORIES																															
INFINITY RS4	SIZE	WEIGHT*																															
		4' x 4'	52 lbs																														
		4' x 10'	82 lbs																														
		4' x 12'	97 lbs																														
		6' x 8'	90 lbs																														
		3' Corner	20 lbs																														
		45°	33 lbs																														
	90°	36 lbs																															
	ACCESSORIES AVAILABLE		5-SIDE DOCK LEGS & POCKET	CLEATS	HINGES	L-BRACES	RAMP ROLLER KIT	SOLAR DOCK LIGHTS	SHORE-END WHEEL KIT	SCREW LEGS	WHEEL-AXLE ADAPTER	BASKETBALL HOOP	BOAT LIFT HANDRAIL	DOCK BENCH (ON- AND OFF-DECK STYLE)	DOCK BUMPERS	DOCK FURNITURE - GRACE	DOCK FURNITURE - KASHTON	DOCK FURNITURE - STANDARD	DOCK STEPS (2 STYLES, 4- AND 6-STEP OPTIONS)	DUAL STAND-UP PADDELEBOARD (SUP) RACK	FIRE TABLE	FISH CLEANING TABLE	FISHING POLE HOLDER	FLAGPOLE HOLDER	HANDRAIL (MULTIPLE LENGTHS AVAILABLE)	GANGWAYS	PIVOT LADDER (3-, 4- AND 5-STEP OPTIONS)	RAMPS	TELESCOPING FLAG POLE	TOW HITCH	UMBRELLA HOLDER	VERTICAL CORNER BUMPER	WATERSPORTS BACK
INFINITY RS7	SIZE	WEIGHT*																															
		4' x 8'	80 lbs																														
		4' x 16'	131 lbs																														
		6' x 8'	97 lbs																														
		6' x 16'	155 lbs																														
	3' Corner	28 lbs																															
	ACCESSORIES AVAILABLE		5-SIDE DOCK LEGS & POCKET	CLEATS	HINGES	L-BRACES	RAMP ROLLER KIT	SOLAR DOCK LIGHTS	SHORE-END WHEEL KIT	SCREW LEGS	WHEEL-AXLE ADAPTER	BASKETBALL HOOP	BOAT LIFT HANDRAIL	DOCK BENCH (ON- AND OFF-DECK)	DOCK BUMPERS	DOCK FURNITURE - GRACE	DOCK FURNITURE - KASHTON	DOCK FURNITURE - STANDARD	DOCK STEPS (2 STYLES, 4- AND 6-STEP OPTIONS)	DUAL STAND-UP PADDELEBOARD (SUP) RACK	FIRE TABLE	FISH CLEANING TABLE	FISHING POLE HOLDER	FLAGPOLE HOLDER	HANDRAIL (MULTIPLE LENGTHS AVAILABLE)	GANGWAYS	PIVOT LADDER (3-, 4- AND 5-STEP OPTIONS)	RAMPS	TELESCOPING FLAG POLE	TOW HITCH	UMBRELLA HOLDER	VERTICAL CORNER BUMPER	WATERSPORTS BACK
INFINITY TS9	SIZE	WEIGHT*																															
		4' x 8'	61 lbs																														
		4' x 16'	102 lbs																														
		6' x 8'	77 lbs																														
		6' x 16'	125 lbs																														
	3' Corner	19 lbs																															
	ACCESSORIES AVAILABLE		5-SIDE DOCK LEGS & POCKET	CLEATS	HINGES	L-BRACES	RAMP ROLLER KIT	SOLAR DOCK LIGHTS	SHORE-END WHEEL KIT	SCREW LEGS	WHEEL-AXLE ADAPTER	BASKETBALL HOOP	BOAT LIFT HANDRAIL	DOCK BENCH (ON- AND OFF-DECK)	DOCK BUMPERS	DOCK FURNITURE - GRACE	DOCK FURNITURE - KASHTON	DOCK FURNITURE - STANDARD	DOCK STEPS (2 STYLES, 4- AND 6-STEP OPTIONS)	DUAL STAND-UP PADDELEBOARD (SUP) RACK	FIRE TABLE	FISH CLEANING TABLE	FISHING POLE HOLDER	FLAGPOLE HOLDER	HANDRAIL (MULTIPLE LENGTHS AVAILABLE)	GANGWAYS	PIVOT LADDER (3-, 4- AND 5-STEP OPTIONS)	RAMPS	TELESCOPING FLAG POLE	TOW HITCH	UMBRELLA HOLDER	VERTICAL CORNER BUMPER	WATERSPORTS BACK
FLOATING FTSS9	SIZE	WEIGHT*																															
		2' x 4'	21 lbs																														
		4' x 4'	30 lbs																														
		4' x 8'	61 lbs																														
		4' x 16'	102 lbs																														
		6' x 8'	62 lbs																														
		6' x 16'	122 lbs																														
	3' Corner	19 lbs																															
	ACCESSORIES AVAILABLE		5-SIDE DOCK LEGS & POCKET	CLEATS	HINGES	L-BRACES	RAMP ROLLER KIT	SOLAR DOCK LIGHTS	SHORE-END WHEEL KIT	SCREW LEGS	WHEEL-AXLE ADAPTER	BASKETBALL HOOP	BOAT LIFT HANDRAIL	DOCK BENCH (ON- AND OFF-DECK)	DOCK BUMPERS	DOCK FURNITURE - GRACE	DOCK FURNITURE - KASHTON	DOCK FURNITURE - STANDARD	DOCK STEPS (2 STYLES, 4- AND 6-STEP OPTIONS)	DUAL STAND-UP PADDELEBOARD (SUP) RACK	FIRE TABLE	FISH CLEANING TABLE	FISHING POLE HOLDER	FLAGPOLE HOLDER	HANDRAIL (MULTIPLE LENGTHS AVAILABLE)	GANGWAYS	PIVOT LADDER (3-, 4- AND 5-STEP OPTIONS)	RAMPS	TELESCOPING FLAG POLE	TOW HITCH	UMBRELLA HOLDER	VERTICAL CORNER BUMPER	WATERSPORTS BACK

Specifications subject to change without notice and without incurring obligation. See dealer for more information including warranty details.

*Weights listed are for frame only (does not include decking)

SHOREMASTER



PREMIUM DOCKS, BOAT LIFTS AND ACCESSORIES